



GLOBAL LEADER IN THE REAL-TIME LOCATION SYSTEM

Industrial spaces are dynamic and complex, with traffic and obstacles that make tracking equipment, assets, and people challenging. Redpoint Positioning has developed patented, game-changing technology that combines the connectivity of the Internet of Things (IoT) with a powerful, real-time location system (RTLS).

The RTLS provides unprecedented visibility into how things are moving in real-time, empowering you with actionable data to improve safety, efficiency, and productivity and driving a new generation of solutions for connected industrial environments.

PATENTED, GAME-CHANGING TECHNOLOGY

Redpoint's real-time location system (RTLS) is the most accurate, reliable system available to fully connect your indoor environment, and the only true low latency solution on the market.

Our patented technology is embedded into every device on our platform. That means that every performance limitation that stops other devices—crowding, heavy equipment, wide spaces, and speeding motion—won't stop our system.

Redpoint's RTLS At-A-Glance



ACCURATE

Real-time location uses Ultra-Wideband (UWB) and maintains accuracy in the most complex environments



SCALABLE

Enables large and scalable coverage with unlimited tags



FAST

Very low latency means quick response times and more control, even when server is disconnected



CONNECTED

Equipment and people are always connected, creating a mesh network



OPEN

Easy integration between systems and sensor data

USE CASES

Vehicle Safety

Manage vehicle speed, designated traveling area, and direction



Personnel Safety

Notify personnel of potential hazards, two-way communication



Social Distancing

Enforce distance between personnel with warning system



Event History

Use historical data to identify contact between personnel



Indoor Navigation

Expedite journey to targeted destination



Operation Management

Monitor operations and inefficiencies



Asset Tracking

Full asset traceability to reduce shrinkage rate and search time



Sensor Integration

Associate RTLS and sensors data from connected external devices

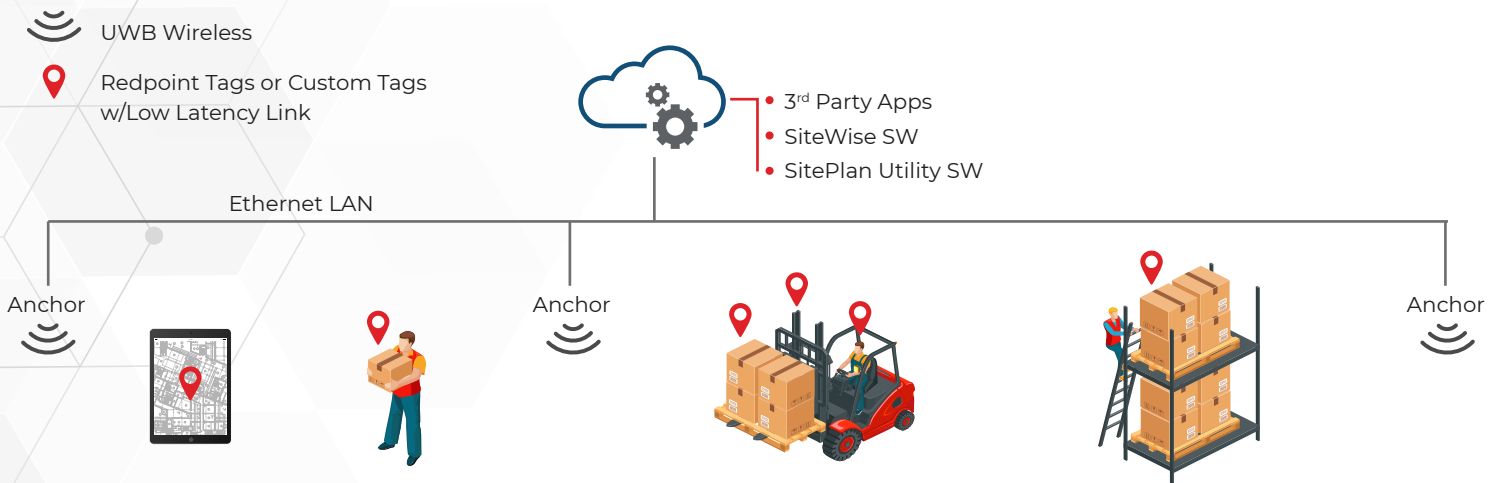


SYSTEM OVERVIEW

Redpoint's real-time location system (RTLS) consists of four key elements:

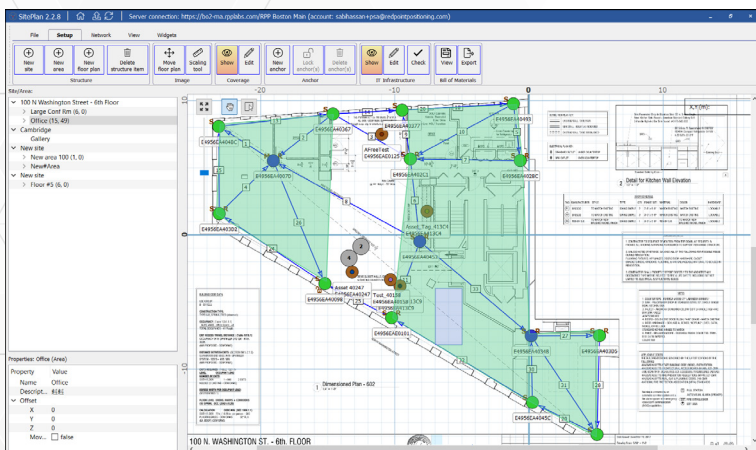
1. **WIN anchors:** Form a virtual, wireless, geofenced environment.
2. **Location tags:** Attached to important objects, vehicles, or personnel generate their locations in real-time.
3. **RTLS server:** Tracks and identifies these objects, vehicles, or personnel and issues specific instructions to them with its built-in intelligence. Manages the system, processes and stores data, and provides an open interface for third-party applications.
4. **Application web portal (SiteWise):** Visualizes location in a real-time and historical view.

The system is powerful, versatile, and highly configurable, enabling you to build complete solutions to track the movement of an unlimited number of objects, define their access parameters, and improve workflow. Redpoint's RTLS also integrates with existing or third-party systems.



Wireless Infrastructure Network (WIN) Anchor

- Self-organizing mesh network of anchors
- Provides location and data services
- Self-calibrating

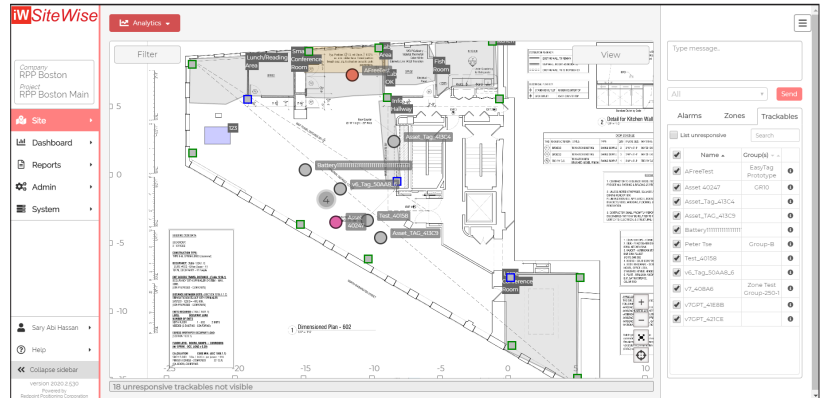


SitePlan (RTLS Server Software)

- Cloud-based or on-premise, used to define RTLS coverage based on actual floor plans
- Optimize the system for high precision and low latency performance
- Define and manage users, zones, and trackables
- Manage network and devices

SiteWise (Application Software)

- Graphical representation and real-time visualization of the entire environment
- View heatmaps and spaghetti diagrams to track paths and visualize activity, roadblocks, interactions, and near-miss events
- Search and locate individuals or assets
- Manage location data, alarms, and events
- Use analytics, reports and dashboard for discovering inefficiencies and reviewing forensic data



Tags (personnel, asset, and vehicle)

- Communicates with wireless network (WIN)
- Calculates its own position with high accuracy
- Receives direct text messages or calls for assistance (Personnel Badge)

ABOUT REDPOINT POSITIONING CORPORATION

Redpoint Positioning was founded in 2014 by award-winning technologists and location experts, Chunjie Duan and Georgiy Pekhterev. The Redpoint team has completed over 15 years of fundamental research on UWB and positioning technology and has led the industry in the development of location tracking systems, including the world's first IEEE 802.15.4a positioning system.

Redpoint's real-time location system (RTLS) delivers improvements in safety, efficiency, and productivity and can be deployed stand-alone or interfaced with a client's existing software platform. Redpoint holds five patents for proprietary components of their cutting-edge system with several other patents pending.



To schedule a demonstration or learn more, contact us today
at +1 (617) 207-4096 or visit www.redpointpositioning.com.